

LABBEASY

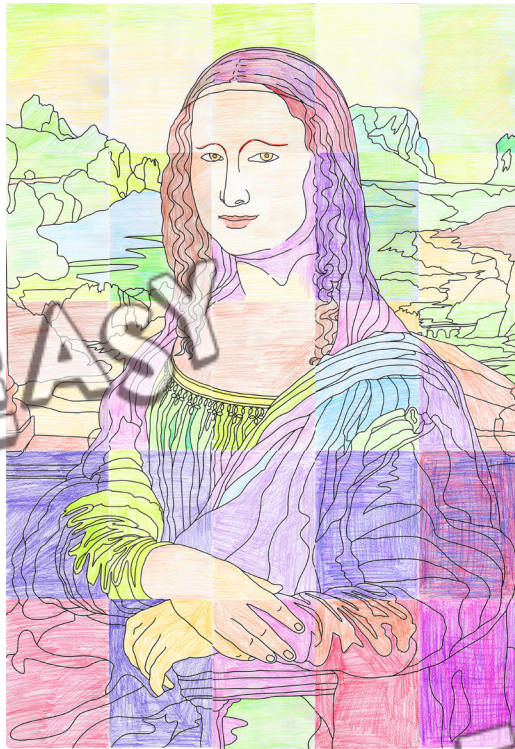
Poster

Leonardo da Vinci - Mona Lisa

Miniature (6.8 x 4.7 in / 17.4 x 12 cm)

Study painting (9.7 x 6.7 in / 24.6 x 17 cm)

Poster (45.3 x 31.5 in / 115 x 80 cm)



PDF 4204-EN

LABBEASY

LABBEASY

Poster

Leonardo da Vinci - Mona Lisa

About the artist and his painting	Pages 3 - 4
Miniature template	Page 5
Study painting template	Page 6
Instructions, poster	Page 7
Poster templates	Pages 8 - 32

PRINT SETTINGS

Please use Acrobat Reader to print and make sure that the settings 'Actual size' and 'Auto portrait/landscape' are selected.

SAVE PAPER & TONER

Only print out the pages you need.

COPYRIGHT & LICENCE

This material is protected by copyright. Labbé holds exclusive rights. © Labbé Publishing

This PDF file may only be used by the original purchaser and is intended for personal use and teaching. Distribution of the PDF file to school staff or to parents and students is not permitted. It is also not permitted to make it available on the internet or to place it on a school server. It is prohibited to use the PDF file, printouts of the PDF file, and objects created from it for commercial purposes. For more information, visit www.labbeasy.com

INTRODUCTION

Leonardo da Vinci - Mona Lisa

With his Mona Lisa („La Gioconda“) the Italian artist Leonardo da Vinci (1452 – 1519) created a legend in Renaissance art. The painting, which was created around 1502 and hangs in the Louvre museum in Paris, still captivates thousands of visitors every day.

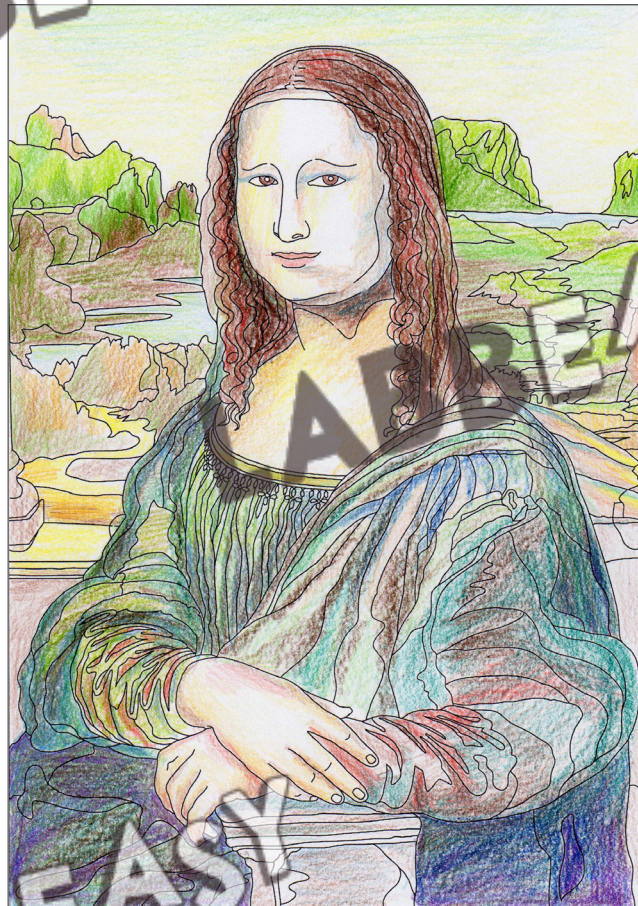
Da Vinci, who has gone down in history as a creative universal genius, shows us a woman in a half portrait with a landscape in the background. What's special is the atmosphere of the picture: because her face is modeled mainly by light and shadow and lacks clear contour (sfumato technique), it appears soft and mysterious.

This work is one of the most famous paintings ever. Its fame has meant that it's inspired many imitations in the visual arts. You can also find countless caricatures of the Mona Lisa: as a duck, a cartoon character, a celebrity, with different objects in her hand or her finger up her nose- proof of her universal fame.



But what makes the image so interesting? Since its creation, the "mysterious smile" of Mona Lisa has become a well-known phrase. No single emotion can be attributed to her facial expression alone. She appears friendly and lovely but at the same time reserved and cold.

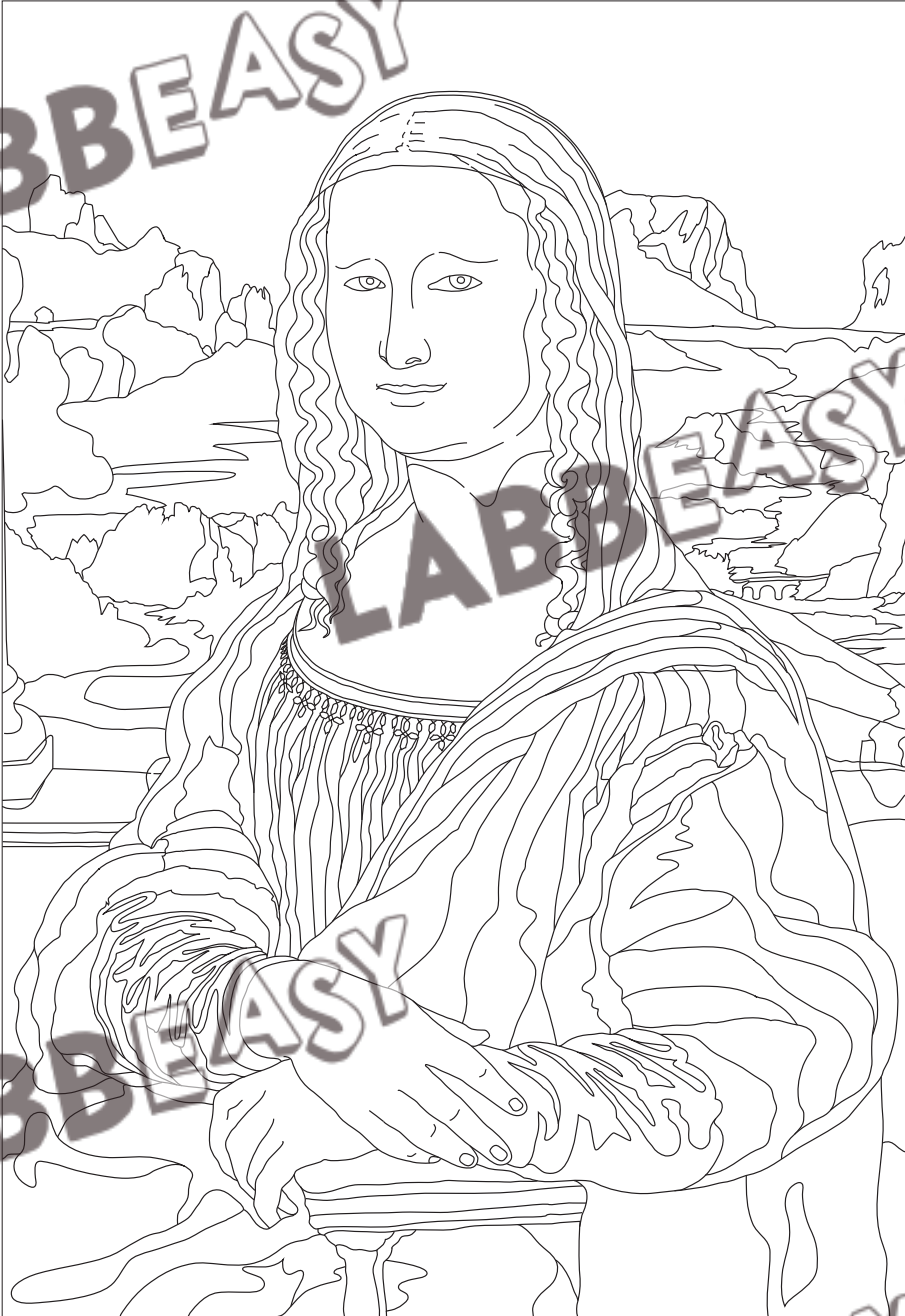
Children and young people are particularly captivated by the way Mona Lisa seems to always follow your gaze. Leonardo achieved this by using two different vanishing points. The enigmatic expression of her face leaves it up to the viewer's ideas and suggestions as to what lies behind the mysterious atmosphere of the painting and how this is achieved.



Since research even to this day has not been able to solve all the questions this painting poses, it remains ever topical and exciting. In addition to the mystery of her special smile and observant look, the popularity of the painting is probably also related to the fact that it's a masterpiece from da Vinci and is a perfect reflection of his genius skills.

Micha Labbé

LABBEASY



LABBEASY

LABBEASY

Leonardo da Vinci - Mona Lisa

LABBEASY