

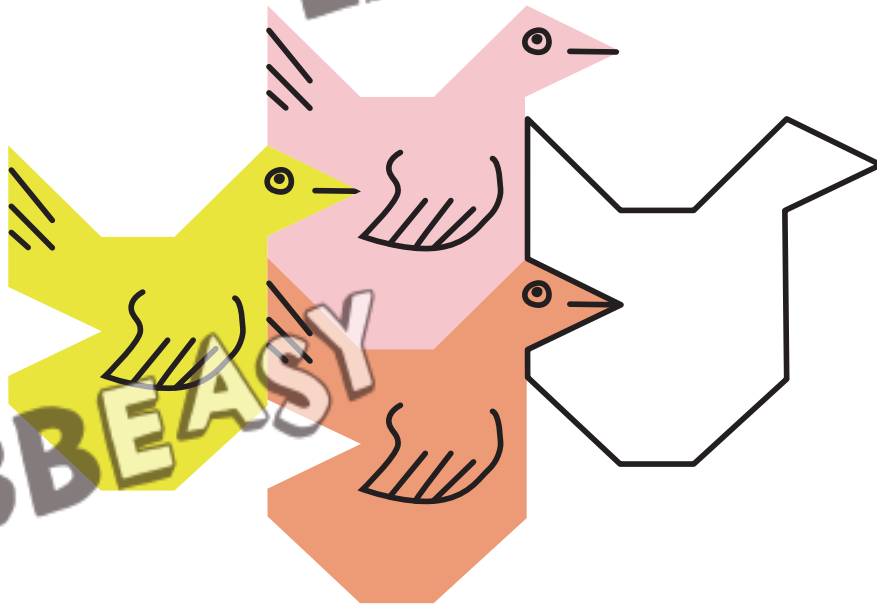
LABBEASY

LABBEASY

Animal Tiles

Templates for tiles with 6 different animal motifs

LABBEASY



LABBEASY

LABBEASY

LABBEASY

LABBEASY

Animal Tiles

Overview	Page 3
Introduction	Page 4
How to do it	Page 5
'Nibbling technique' instructions	Pages 6 - 7
Cat	Pages 8 - 10
Dog	Pages 11 - 13
Owl	Pages 14 - 16
Goose	Pages 17 - 19
Fish	Pages 20 - 22
Monster	Pages 23 - 25

PRINT SETTINGS

Please use Acrobat Reader to print and make sure that the settings 'Actual size' and 'Auto portrait/landscape' are selected.

SAVE PAPER & TONER

Only print out the pages you need.

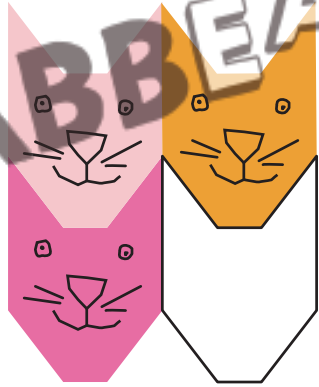
COPYRIGHT & LICENCE

This material is protected by copyright. Labbé holds exclusive rights. © Labbé Publishing

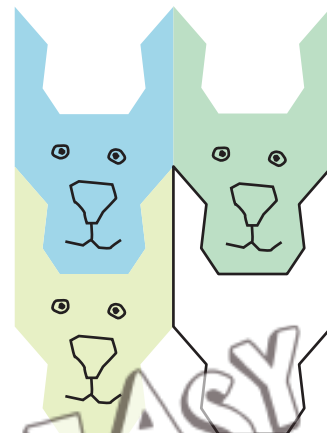
This PDF file may only be used by the original purchaser and is intended for personal use and teaching. Distribution of the PDF file to school staff or to parents and students is not permitted. It is also not permitted to make it available on the internet or to place it on a school server. It is prohibited to use the PDF file, printouts of the PDF file, and objects created from it for commercial purposes. For more information, visit www.labbeasy.com

OVERVIEW

Animal Tiles



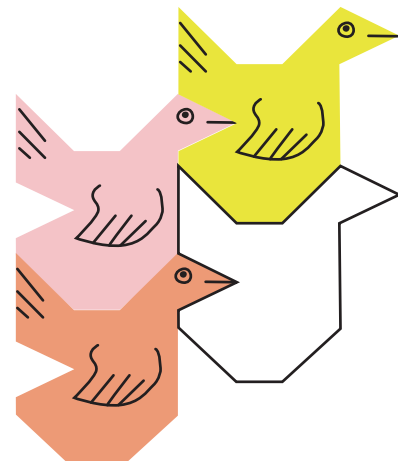
Cat
Pages 8 - 10



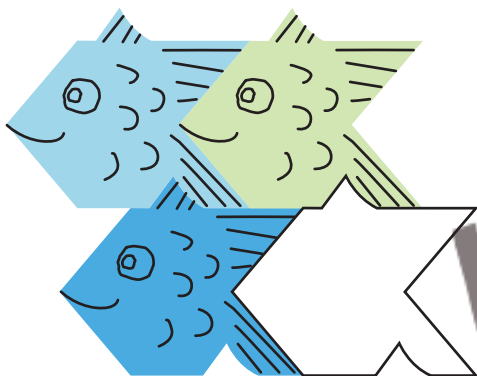
Dog
Pages 11 - 13



Owl
Pages 14 - 16



Goose
Pages 17 - 19



Fish
Pages 20 - 22



Monster
Pages 23 - 25

INTRODUCTION

About Animal Tiles

Kids can make 'crazy paving' with animal tiles: Cats, dogs, owls, fish, etc. - just like the famous artist M.C. Escher. And at the same time, they'll pick up some basic geometry!

You'd normally tile a surface with tiles of the same design and shape. In math it's known as tessellation, which means covering an area with pieces of the same shape, without gaps or overlaps.



The everyday tessellation of squares and rectangles, such as tile patterns in the bathroom, paving stones in the pavement, bricks in the wall, etc., is so ordinary that we hardly notice it. The graphic artist M.C. Escher (1898 - 1972), however, developed perplexing tessellation patterns that never cease to amaze. With his 'nibbling technique', he invented a method to create puzzle-like tiling of interlocking figures, animals, mythical creatures, etc.

With the 'nibbling technique', even kids can construct these amazing Escher-style tessellated pictures. With this method, one side of a square is 'nibbled' with scissors. The piece you've 'nibbled' is then glued back on to the other side.

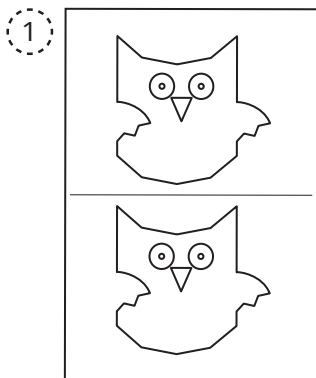
Micha Labbé

HOW TO DO IT

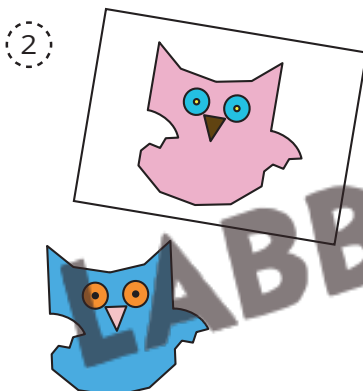
Animal Tiles

ANIMAL TILE SHAPES

These animal tile shapes are suitable for the quick creation of a tessellated surface. The large motifs are easy to cut out and give kids scope for detailed creative work. The shapes are suitable for individual work and group projects.



Select a motif and print it out as many times as you like. The sheets can be cut in half.



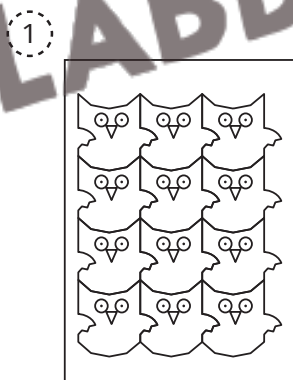
Draw on the tiles and carefully cut them out along the outer edges.



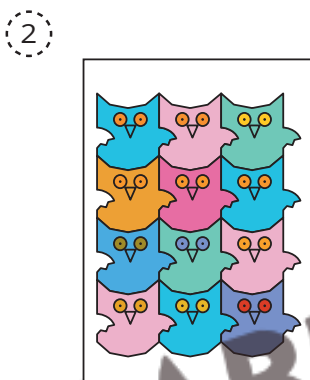
Glue several parts together on a big piece of packing paper or card to make a large, tessellated animal picture!

SMALL ANIMAL TILES

The small animal tiles are suitable for creating a detailed pattern. While you're doing it, the principle of tessellation becomes clear. They're especially suited to art-class topics, such as learning about color theory. Paint each tile in a different shade of blue, for example.



Select a motif and print it out as many times as you like.



Draw on the tiles and carefully cut them out along the outer edges.



Glue several parts together on a big piece of paper or card to make a large, tessellated animal picture!