

Modern Classics

Juan Gris - Harlequin with Guitar

Postcards (5.8 x 4.1 in / 14.8 x 10.5 cm)

Miniature (5.7 x 4.2 in / 14.5 x 10.7 cm)

Study painting (9 x 6.7 in / 23 x 17 cm)

Poster (35 x 26.2 in / 89 x 66.5 cm)



Modern Classics

Juan Gris - Harlequin with Guitar

About the artist and his painting	Page 3
Instructions, poster	Page 4
Postcard templates	Page 5
Miniature template	Page 6
Study painting template	Page 7
Poster templates	Pages 8 - 23

PRINT SETTINGS

Please use Acrobat Reader to print and make sure that the settings 'Actual size' and 'Auto portrait/landscape' are selected.

SAVE PAPER & TONER

Only print out the pages you need.

COPYRIGHT & LICENCE

This material is protected by copyright. Labbé holds exclusive rights. © Labbé Publishing

This PDF file may only be used by the original purchaser and is intended for personal use and teaching. Distribution of the PDF file to school staff or to parents and students is not permitted. It is also not permitted to make it available on the internet or to place it on a school server. It is prohibited to use the PDF file, printouts of the PDF file, and objects created from it for commercial purposes. For more information, visit www.labbeasy.com

ABOUT THE ARTIST AND HIS PAINTING

Juan Gris - Harlequin with Guitar



After Juan Gris "Harlequin with Guitar" from 1919, oil on canvas,
45.7 x 35 in / 116 x 89 cm, Galerie Louise Leiris (Paris)

Juan Gris (1887 - 1927)

Spanish artist Juan Gris was a book illustrator, stage and costume designer and cubist painter. He is best known for his cubist pictorial collages. His artistic development was influenced by Pablo Picasso, Georges Braque and Henri Matisse and he became one of the most important cubists. The division of objects into geometric forms is a typical element of his works.

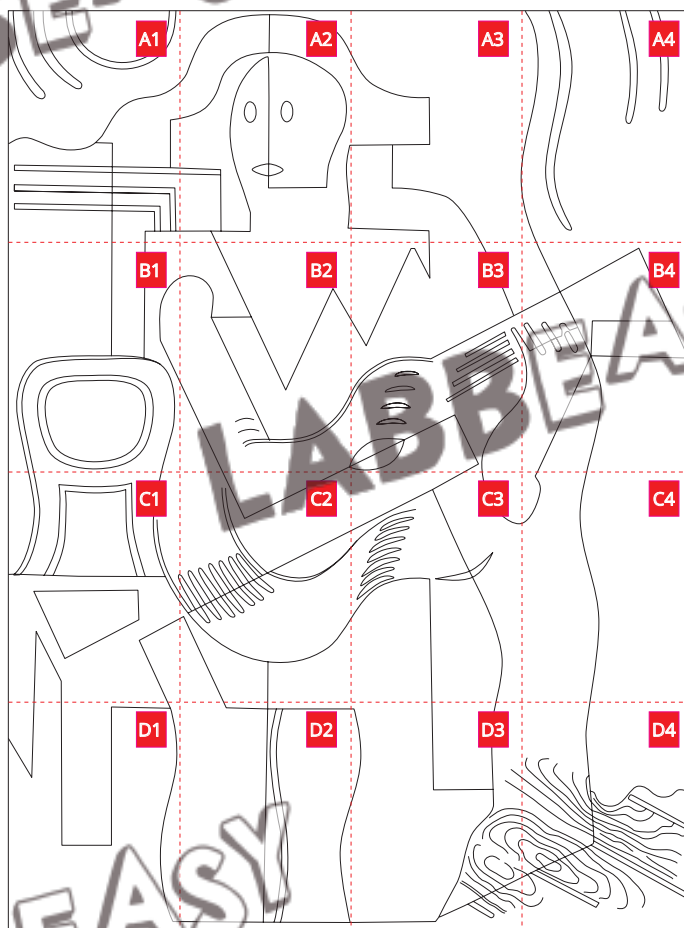
Harlequin with Guitar

(1928, oil on canvas, 19.7 x 23.2 in / 50 x 59 cm)

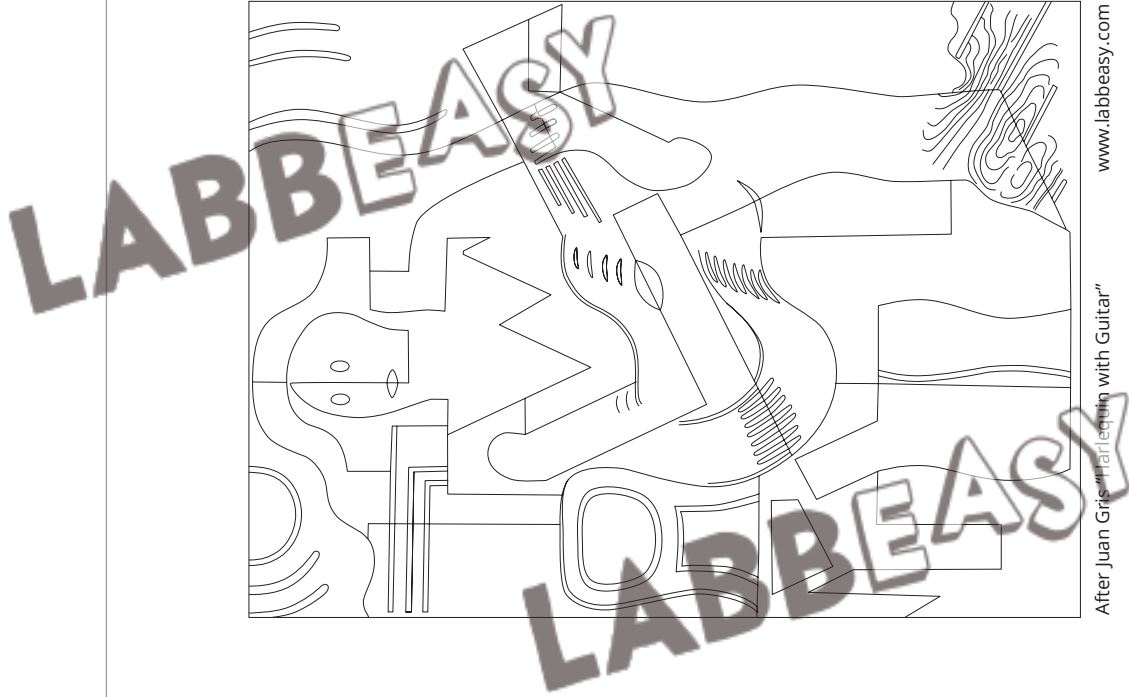
"Harlequin with Guitar" is an excellent example of how Juan Gris reduces an image from reality to shapes and colors, arranging the structure into geometric forms. The wavy lines that flow into the picture create a more poetic painting style- keeping with the theme. The choice of colors suggests candlelight and gives the painting a romantic mood. Therefore, despite the disillusioning reduction of reality to geometrically calculated forms, Juan Gris still manages to convey the true mood.

HOW TO MAKE IT

Poster after Juan Gris - Harlequin with Guitar

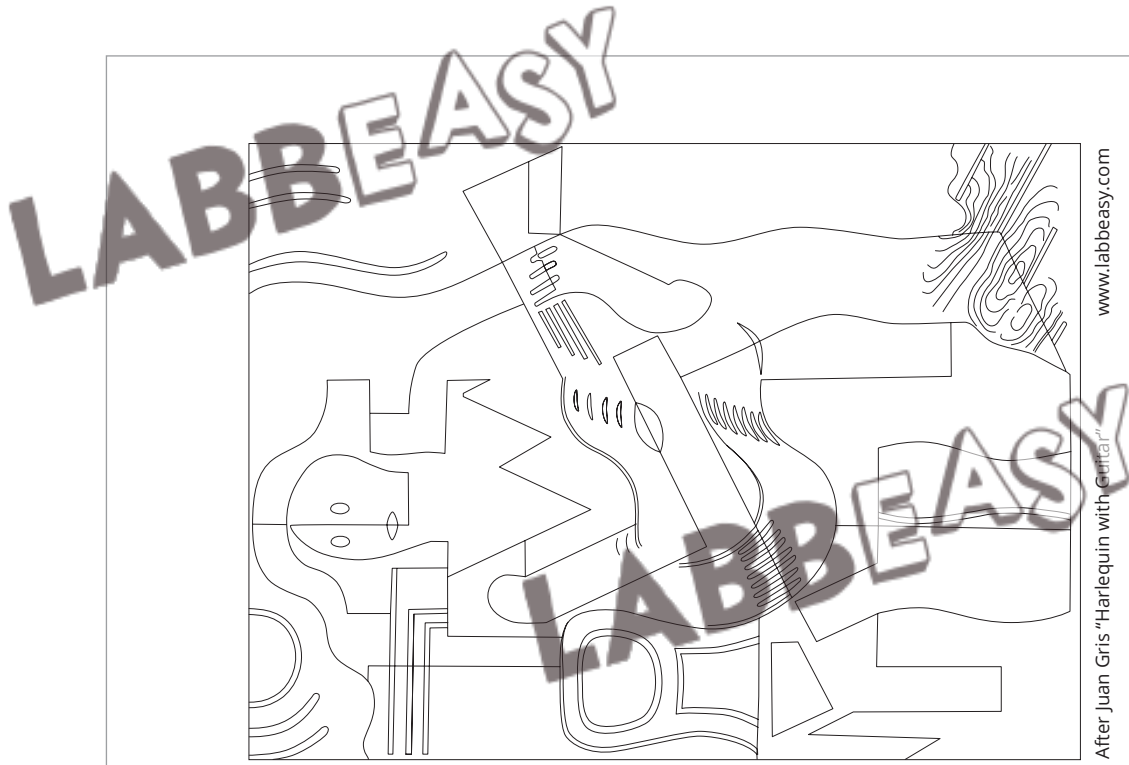


- 1 Print pages 8-23 on white printing paper.
- 2 Color or paint the individual sheets according to the template or your own imagination. Make sure that the dotted lines around the outside remain visible.
- 3 Once dry, cut out the colored sheets along the dotted lines and sort them- each letter in a separate pile. Then sort them by number so that 1 is on top and 4 is on the bottom.
- 4 Glue all 'A' sheets together. To do so, apply glue to the long tab on the right side of sheet A1 and glue sheet A2 on top of it so that its left edge is aligned with the solid line. Glue A3 to A2 and A4 to A3. Repeat this process with rows B, C and D.
- 5 Now glue row B's upper edge to the tab on the lower edge of row A. Then glue row C to row B and row D to row C. Your poster is finished!



www.labbeasy.com

After Juan Gris "Harlequin with Guitar"



www.labbeasy.com

After Juan Gris "Harlequin with Guitar"