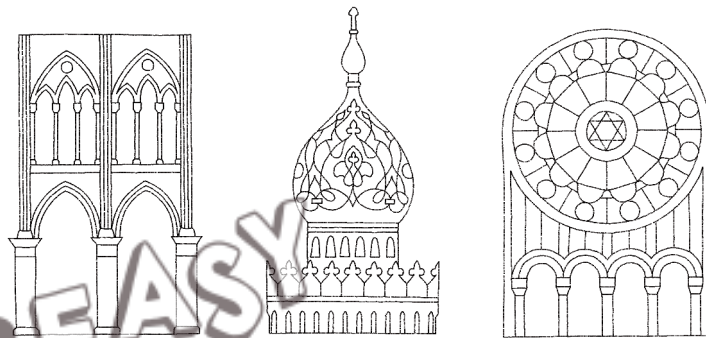


Light Portals

Pin-prick templates of 16 different motifs from the most beautiful mosques, churches and synagogues



Light Portals

Introduction	Page 3
Pin-prick templates	Pages 4 - 19

PRINT SETTINGS

Please use Acrobat Reader to print and make sure that the settings 'Actual size' and 'Auto portrait/landscape' are selected.

SAVE PAPER & TONER

Only print out the pages you need.

COPYRIGHT & LICENSE

This material is protected by copyright. Labbé holds exclusive rights. © Labbé Publishing

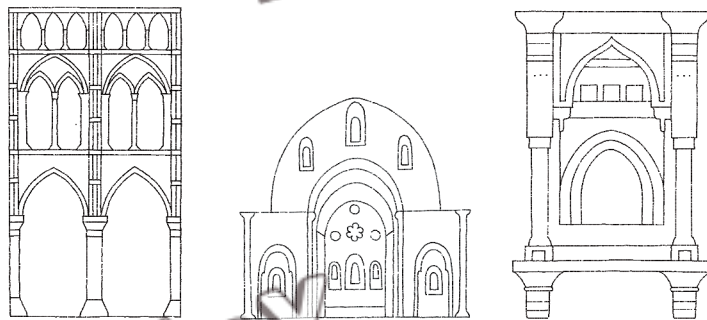
This PDF file may only be used by the original purchaser and is intended for personal use and teaching. Distribution of the PDF file to school staff or to parents and students is not permitted. It is also not permitted to make it available on the internet or to place it on a school server. It is prohibited to use the PDF file, printouts of the PDF file, and objects created from it for commercial purposes. For more information, visit www.labbeasy.com

INTRODUCTION

Light Portals

When we pin-prick, imaginary lines and shapes are created through the points of light. The completed pin-prick works resemble precious lace or finely embroidered dreamlike scenes. These images, reduced to dots, are particularly good for simplifying complicated shapes and comparing them with one another. For 'Light Portals' we have taken structures and patterns from cathedrals, monasteries, churches, mosques and synagogues made from masses of stone and reduced them to pin-pricked lines.

Today, we can hardly imagine what the impression these building made on people of the past. Churches, cathedrals and mosques were often the only stone buildings far and wide. Church steeples and minarets dominated the landscape for miles around. The contrast between these towering structures and the primitive, poor dwellings of the people must have been overwhelming.



The most skilled architects, inventors, engineers and artists of their time worked on these places of worship to create spaces of peace and contemplation. Upon entering such spaces, we feel a sense of magic and even people who are not otherwise religious or have an interest in art or architecture feel a certain reverence.

Pin-prick art is the art of poor people: it's a very simple and popular handicraft because every house maid had a piece of paper and a needle. A pin-pricked image is a very effective work of art- when you hang it in the window, the light streams through the pin-pricked holes and turns the lines into individual points of light.

The final result always makes you wonder- did I really make this work of art? After all, I only poked holes in paper... W O W !

Micha Labbé

LABBEASY

LABBEASY

LABBEASY

LABBEASY

Entryway at the Kaaba, Mecca, Saudi Arabia

LABBEASY

LABBEASY

LABBEASY

LABBEASY

Synagogue Temple Emanu-El, New York