

# LABBEASY

LABBEASY

## Songbirds

Five well-known songbirds that you can color in, cut out, and hang up

LABBEASY



LABBEASY

LABBEASY

PDF 4259-EN

# LABBEASY

LABBEASY

## Songbirds

Overview .....	Page 3
How to do it .....	Page 4
House Sparrow .....	Page 5
Robin .....	Page 6
Great Tit .....	Page 7
Blackbird .....	Pages 8 - 9
Chaffinch .....	Page 10

### PRINT SETTINGS

Please use Acrobat Reader to print and make sure that the settings 'Actual size' and 'Auto portrait/landscape' are selected.

### SAVE PAPER & TONER

Only print out the pages you need.

### COPYRIGHT & LICENCE

This material is protected by copyright. Labbé holds exclusive rights. © Labbé Publishing

This PDF file may only be used by the original purchaser and is intended for personal use and teaching. Distribution of the PDF file to school staff or to parents and students is not permitted. It is also not permitted to make it available on the internet or to place it on a school server. It is prohibited to use the PDF file, printouts of the PDF file, and objects created from it for commercial purposes. For more information, visit [www.labbeasy.com](http://www.labbeasy.com)

OVERVIEW

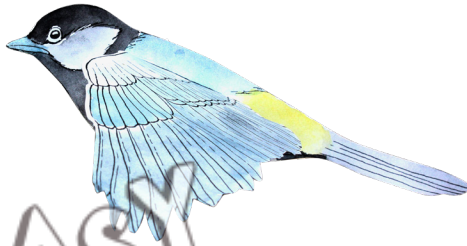
# Songbirds



HOUSE SPARROW  
Page 5



ROBIN  
Page 6



GREAT TIT  
Page 7



BLACKBIRD  
Pages 8 - 9



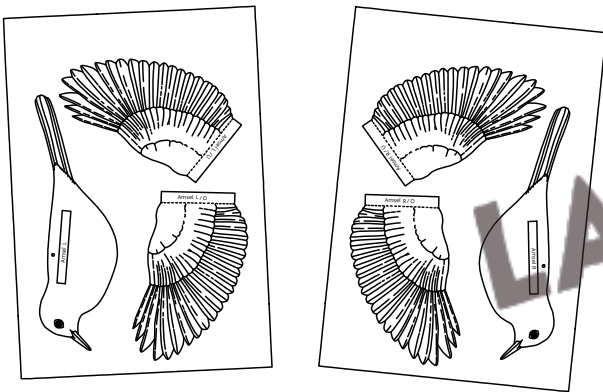
CHAFFINCH  
Page 10

## HOW TO DO IT

# Songbirds

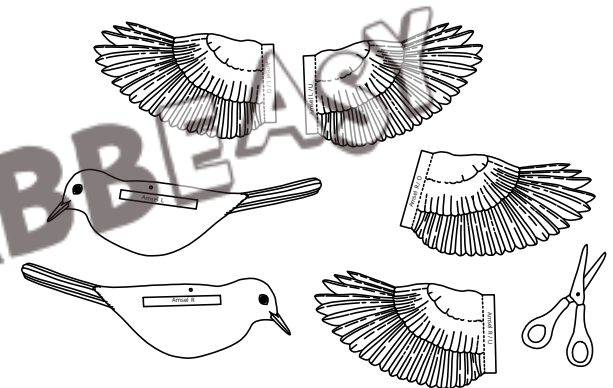
LABBEASY

1



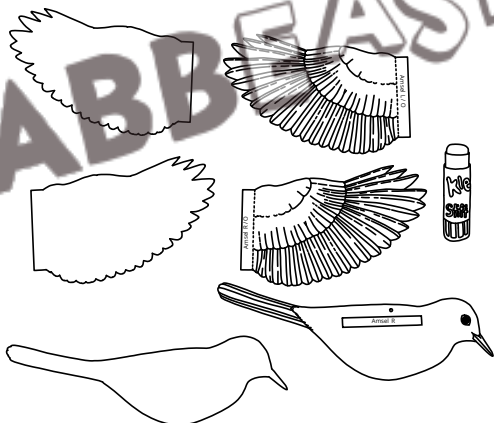
Print out the templates for the desired birds on white heavy printing paper.

2



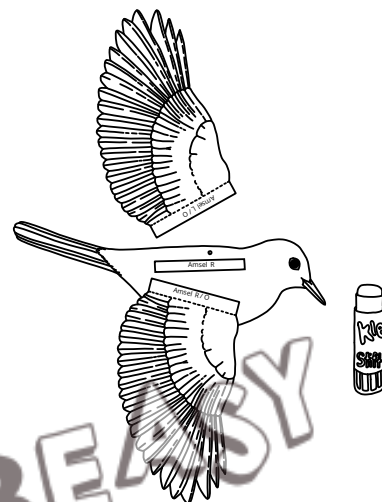
Color in the body parts with crayons or felt-tip pens and carefully cut them out.

3



Glue the white sides of the parts together exactly: Left wing = the top side (L/T) on the underside (L/U). Right wing = the top side (R/T) on the underside (R/U). Glue both parts of the bird's body together in the same way.

4



Glue the two wings to the body so that the glueing tabs can't be seen. Thread a piece of string or cotton through the hanging hole so that you can hang it up. The birds make really nice mobiles!

**HOUSE SPARROW**

