

LABBEASY

SEWING FOR KIDS

Rag Dolls

Sewing templates for

Girl doll, small - 11 in (28 cm)

Boy doll, small - 11 in (28 cm)

Girl doll, large - 15 in (38 cm)

Boy doll, large - 15 in (38 cm)



PDF 4018-EN

LABBEASY

SEWING FOR KIDS

Rag Dolls

Materials & basic stitches	Page 3
Sewing instructions	Pages 4 - 5
Girl sewing pattern, small	Pages 6 - 7
Boy sewing pattern, small	Pages 8 - 9
Girl sewing pattern, large	Pages 10 - 13
Boy sewing pattern, large	Pages 14 - 17

PRINT SETTINGS

Please use Acrobat Reader to print and make sure that the settings 'Actual size' and 'Auto portrait/landscape' are selected.

SAVE PAPER & TONER

Only print out the pages you need.

COPYRIGHT & LICENSE

This material is protected by copyright. Labbé holds exclusive rights. © Labbé Publishing

This PDF file may only be used by the original purchaser and is intended for personal use and teaching. Distribution of the PDF file to school staff or to parents and students is not permitted. It is also not permitted to make it available on the internet or to place it on a school server. It is prohibited to use the PDF file, printouts of the PDF file, and objects created from it for commercial purposes. For more information, visit www.labbeasy.com

HOW TO MAKE IT

Rag Dolls

MATERIALS NEEDED

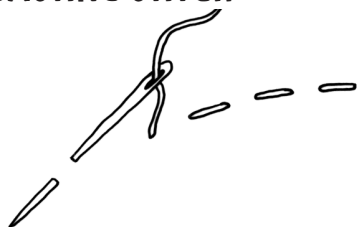
- Scissors
- Glue for paper
- Felt tip pen
- Pins
- Thread
- Sewing needle
- Fabric (small doll: 2 pieces each 13 x 17 in [32 x 42 cm], large doll: 2 pieces each 16 x 20 in [40 x 52 cm])
- Optional: buttons, wool, fabric scraps, embroidery thread, fabric pens, etc. for your own designs



There are no limits to how you can design your doll. Many materials you can find at home in a craft box you can use to make the doll a face and some clothes.

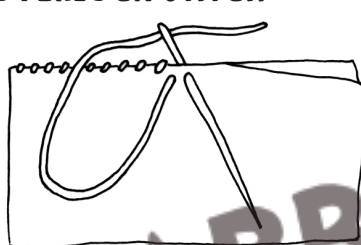
BASICS

BASTING STITCH



Use the basting stitch to sew two layers of fabric together. To do so, sew in one direction, up - down - up - down. Leave a small space between each stitch.

OVERLOCK STITCH



Use the overlock stitch to sew two edges together or close openings after stuffing an item. Sew from one side to another at small intervals.

BACKSTITCH



Use the backstitch to sew a continuous line. To do so, stick the needle behind the last stitch and bring it back up from underneath, now in front of the stitch.

HOW TO MAKE IT

Rag Dolls

1



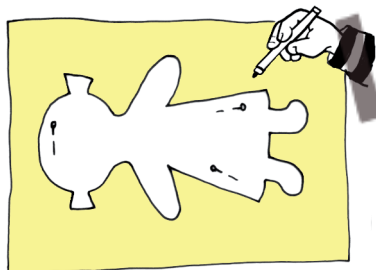
Cut the pattern sheets along the dotted lines and glue the pieces together at the shaded areas.

2



Now cut out the glued pattern along the solid line.

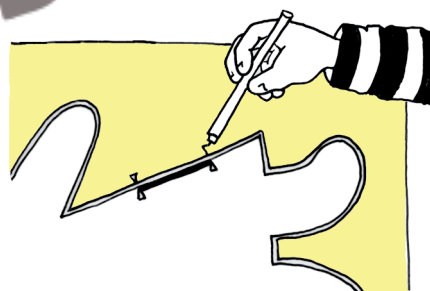
3



Cut two pieces of fabric the same size:
Small dolls: each 13 x 17 in (32 x 42 cm)
Large dolls: each 16 x 20 in (40 x 52 cm)

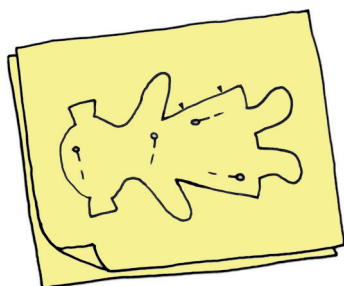
Center the pattern on the back of one piece of fabric and secure it with 2-3 pins to keep it in place. Outline the shape with a felt tip pen to create the sewing line. As you do this, hold down the pattern with your free hand.

4



Also mark the opening onto the fabric. Remove the pins and remove the pattern from the fabric.

5



Place the two pieces of fabric exactly on top of each other so the right sides of the fabric both face inward and the sewing line you drew is on the outside. Pin the two pieces of fabric together with a few pins or safety pins.

6



Now it's time to sew:
Important: Leave the space between the two markings open for filling later.

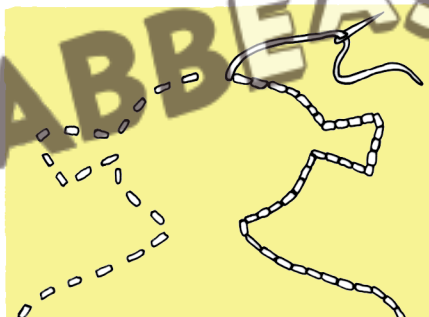
Option 1:

Using a sewing machine, sew the two pieces of fabric together along the line you drew with a straight stitch. So the seam doesn't come loose, sew 3 stitches backwards at the beginning and 3 stitches backwards at the end.

HOW TO MAKE IT

Rag Dolls

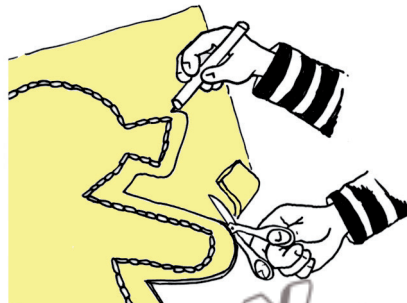
7



Option 2:

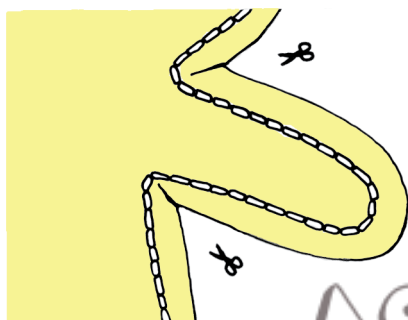
Sew the two pieces of fabric together by hand using a basting stitch along the line you drew. Go over the line again with another basting stitch to create a closed seam. Knot the ends of the thread.

8



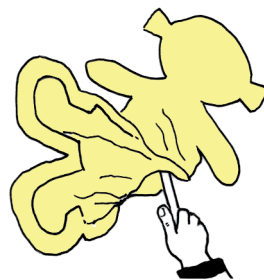
Using a felt tip pen, draw a line about 0.5 in (1-2 cm) around the seam and cut along it to cut off the excess fabric.

9



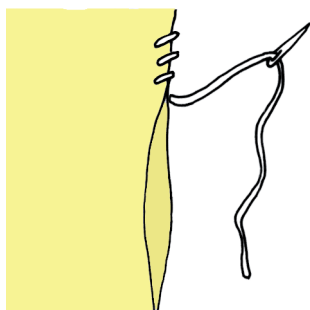
Carefully cut all the corners as shown in the picture so it's easier to turn inside out and doesn't get wrinkles. Be careful not to cut into the seam.

10



Turn the doll inside out so that the right side of the fabric is on the outside. To help you do this, you can use a pencil or spoon handle. Fill the doll with stuffing or fabric scraps through the opening.

11



Fold the fabric at the opening inward and sew it closed by hand with an overlock stitch. Knot and sew up the ends of the thread.

12



If you like, you can give the doll a face. Embroider or sew on eyes, a mouth and a nose. You can make funny faces with buttons or beads.