

LABBEASY

LABBEASY

Seasons Quadrama

Four season templates with 2-D and 3-D stickers you can cut out, color, and stick on

LABBEASY

LABBEASY



LABBEASY

PDF 4171-EN

LABBEASY

LABBEASY

Seasons Quadrama

Introduction	Page 3
Overview	Page 4
How to do it	Page 5
Quadrama templates	Pages 6 - 9
Blank templates	Page 10
3-D stickers	Page 11
2-D stickers	Page 12

PRINT SETTINGS

Please use Acrobat Reader to print and make sure that the settings 'Actual size' and 'Auto portrait/landscape' are selected.

SAVE PAPER & TONER

Only print out the pages you need.

COPYRIGHT & LICENCE

This material is protected by copyright. Labbé holds exclusive rights. © Labbé Publishing

This PDF file may only be used by the original purchaser and is intended for personal use and teaching. Distribution of the PDF file to school staff or to parents and students is not permitted. It is also not permitted to make it available on the internet or to place it on a school server. It is prohibited to use the PDF file, printouts of the PDF file, and objects created from it for commercial purposes. For more information, visit www.labbeasy.com

INTRODUCTION

Seasons Quadrama

A diorama is a three-dimensional picture in the form of a display model or 'cabinet' that can create the perfect illusion of spatial depth. The background can be painted to show a landscape, for example, and in the foreground stories can be depicted with model figures. Before we had film, TV, and video, you could depict historical scenes, social settings, occupations, and animals in their natural environments in this manner. The observer could travel through the mini worlds of display cabinets – an exciting thing for little kids of the time.



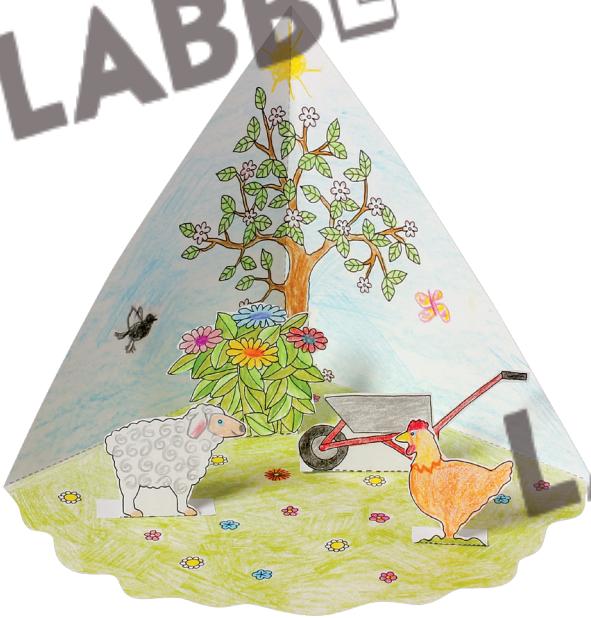
A quadrama is a development of this brilliant idea. Because with a quadrama you can show four scenes that go together at the same time. Seen from above and front on, a quadrama is a type of open pyramid with four separate spaces, where in each space something different is going on. It might sound complicated but it's actually very simple to make, unmake, and remake. The results of such a display are also fascinating in the era of 3-D glasses.

The four seasons of spring, summer, fall, and winter are perfect for a quadrama, with which every kid can make a 3-D model of the changing year. One of the seasons is depicted in each of the four display spaces. The four scenes are already sketched out but can be individualized with the little stickers included in this material. Kids can also fill each scene with their favorite figures, cars, dinosaurs, rocks, snail shells, acorns, etc. and thereby create their own personal seasons.

Micha Labbé

OVERVIEW

Seasons Quadrama



SPRING
Page 6



SUMMER
Page 7



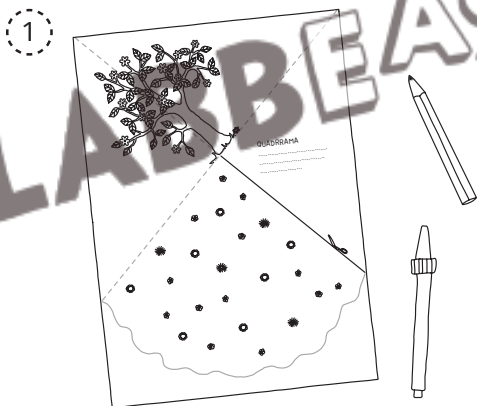
FALL
Page 8



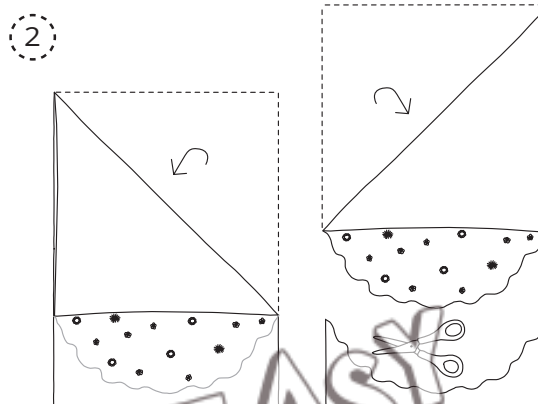
WINTER
Page 9

HOW TO DO IT

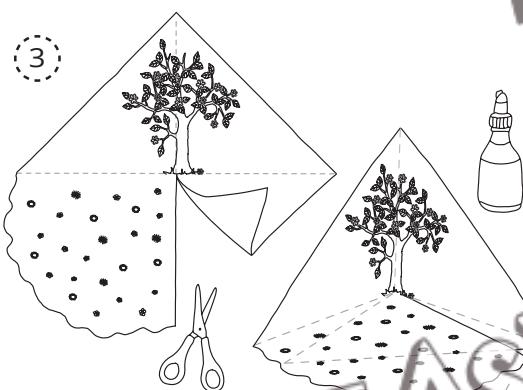
Seasons Quadrama



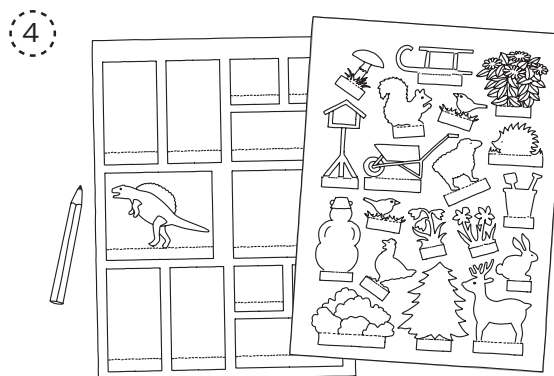
Print the desired season on heavy printing paper. Color in the ground, sky, tree and draw on other motifs if you wish.



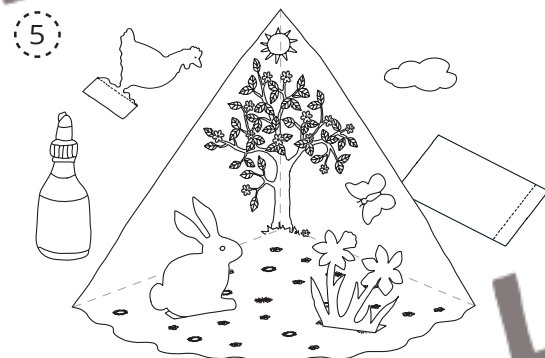
Cut out the template. Fold the card twice along the dotted lines and then unfold again.



Cut along the line marked with a picture of small scissors. Slide the whole right-hand area underneath the base and stick them together.



Either color and cut out the four seasons stickers or use the blank templates to paint and draw your own motifs.



Fold the flaps on the 3-D stickers and glue them to the floor. Simply glue the 2-D stickers (which don't have flaps) directly onto the background.



Fit the four seasons snugly together back to back and glue them together to create your completed artwork.