

LABBEASY

LABBEASY

Embroidery Patterns - Halloween

8 templates in 2 sizes each of embroidery patterns to
stitch on card stock or paper plates

LABBEASY

LABBEASY



LABBEASY

PDF 4621-EN

LABBEASY

LABBEASY

Embroidery Patterns - Halloween

Overview	Pages 3 - 4
How to make it	Pages 5 - 6
Embroidery templates, large	Pages 7 - 10
Embroidery templates, small	Pages 11 - 13

PRINT SETTINGS

Please use Acrobat Reader to print and make sure that the settings 'Actual size' and 'Auto portrait/landscape' are selected.

SAVE PAPER & TONER

Only print out the pages you need.

COPYRIGHT & LICENCE

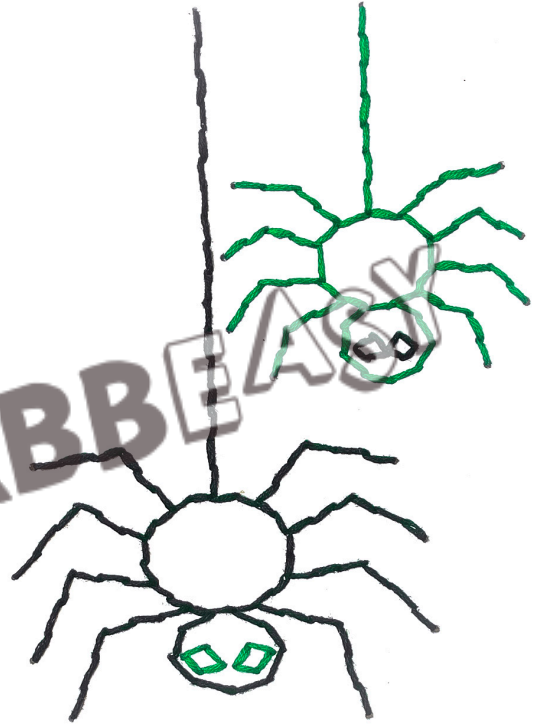
This material is protected by copyright. Labbé holds exclusive rights. © Labbé Publishing

This PDF file may only be used by the original purchaser and is intended for personal use and teaching. Distribution of the PDF file to school staff or to parents and students is not permitted. It is also not permitted to make it available on the internet or to place it on a school server. It is prohibited to use the PDF file, printouts of the PDF file, and objects created from it for commercial purposes. For more information, visit www.labbeasy.com

OVERVIEW

Embroidery Patterns - Halloween

LABBEASY



LABBEASY

LABBEASY



HALLOWEEN

LABBEASY



OVERVIEW

Embroidery Patterns - Halloween

LABBEASY



LABBEASY



HOW TO MAKE IT

Embroidery Patterns - Halloween

1



Print out your chosen pattern on white paper and cut it out along the dotted line.

2



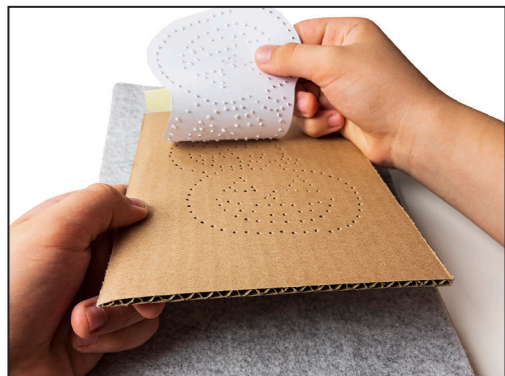
Tape the pattern onto the surface that you want to embroider.

3



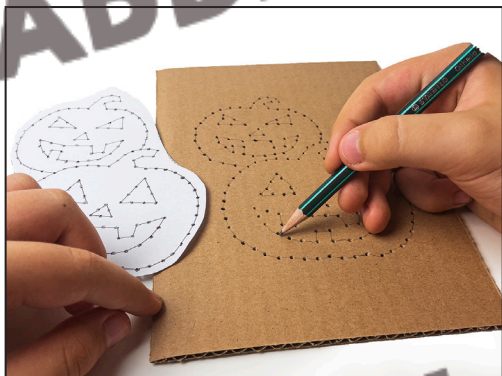
Pierce holes through the dots with a piercing tool. For this you should place a piece of felt, cutting mat or some newspaper underneath.

4



Carefully remove the pattern template from the surface. Keep the template as a guide whilst embroidering.

5



If you like, you can connect the dots with a pencil, so that you can see the shape better when you stitch.

6



Cut a length of embroidery yarn and tie a knot at one end, leaving a little extra at the end. Thread the other end through the eye of an embroidery needle. Push the needle through a hole from the back to the front of the pattern, so that the knot is at the back.