

LABBEASY

LABBEASY

Pop-Up Cards - Mother's Day

Templates for 8 Mother's Day pop-up cards

LABBEASY



LABBEASY

LABBEASY

PDF 4331-EN

LABBEASY

LABBEASY

Pop-Up Cards - Mother's Day

Overview	Page 3
How to make it	Page 4
Base card	Page 5
Mother's Day motifs	Pages 6 - 9
Stick-on labels	Pages 10 - 12

PRINT SETTINGS

Please use Acrobat Reader to print and make sure that the settings 'Actual size' and 'Auto portrait/landscape' are selected.

SAVE PAPER & TONER

Only print out the pages you need.

COPYRIGHT & LICENSE

This material is protected by copyright. Labbé holds exclusive rights. © Labbé Publishing

This PDF file may only be used by the original purchaser and is intended for personal use and teaching. Distribution of the PDF file to school staff or to parents and students is not permitted. It is also not permitted to make it available on the internet or to place it on a school server. It is prohibited to use the PDF file, printouts of the PDF file, and objects created from it for commercial purposes. For more information, visit www.labbeasy.com

LABBEASY

OVERVIEW

Pop-Up Cards - Mother's Day



BOUQUET
Page 6



HEART
Page 6



BUTTERFLY
Page 7



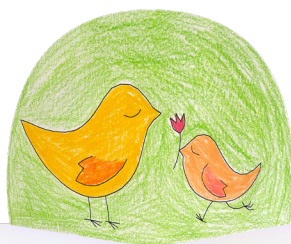
BALLOONS
Page 7



PUPPY
Page 8



MOM
Page 8



MOTHER BIRD & BABY BIRD
Page 9



FLOWER VASE
Page 9

HOW TO MAKE IT

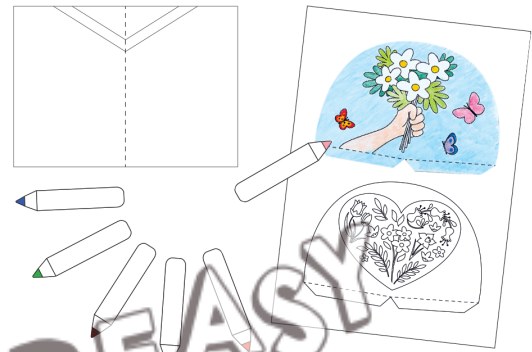
Pop-Up Cards - Mother's Day

1



Print out the base card and your chosen design on heavy printing paper.

2



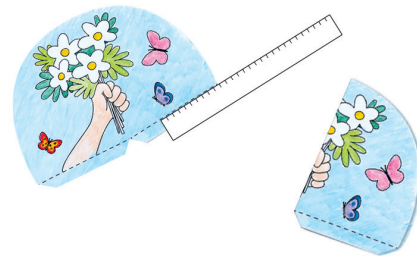
Color the picture. You could use colored pencils, markers or felt-tip pens.

3



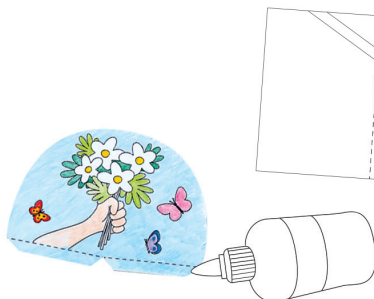
Carefully cut out the card and the motifs.

4



Score along the dotted line using a ruler and a nail file. Fold the glue tab back and fold both the card and the motif down the middle.

5



Apply a little glue to the tab and glue it to the base card.

6



Your pop-up card is finished. If you like, you can also print out a label and glue it on.

BASE CARD FOR ALL POP-UP CARDS

Every pop-up card needs a base card. Print the card on white or colored heavy printing paper and neatly cut along the outer edges. Fold the card horizontally down the middle and unfold again.

