

LABBEASY

LABBEASY

Art Essentials

Color Perspective - Panoramic Landscape

Color-in and cut-out templates for an infinite
panoramic-landscape group project

LABBEASY



LABBEASY

PDF 4538-EN

LABBEASY

LABBEASY

Color Perspective - Panoramic Landscape

Introduction	Page 3
How to do it	Pages 4 - 5
Color Perspective - Panoramic Landscape ...	Pages 6 - 11
Color-in and cut-out templates	Pages 12 - 15

LABBEASY

PRINT SETTINGS

Please use Acrobat Reader to print and make sure that the settings 'Actual size' and 'Auto portrait/landscape' are selected.

SAVE PAPER & TONER

Only print out the pages you need.

COPYRIGHT & LICENCE

This material is protected by copyright. Labbé holds exclusive rights. © Labbé Publishing

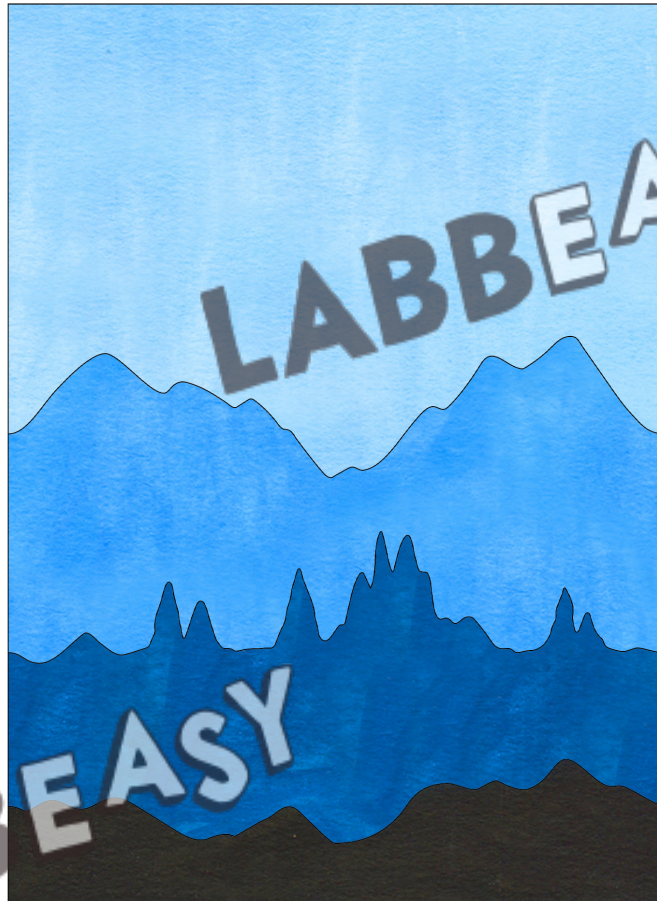
This PDF file may only be used by the original purchaser and is intended for personal use and teaching. Distribution of the PDF file to school staff or to parents and students is not permitted. It is also not permitted to make it available on the internet or to place it on a school server. It is prohibited to use the PDF file, printouts of the PDF file, and objects created from it for commercial purposes. For more information, visit www.labbeasy.com

LABBEASY

INTRODUCTION

Color Perspective - Panoramic Landscape

When you observe a landscape, you notice that as colors become more distant they become paler and less contrasting. At the same time, the colors become bluer and the contours become hazy. The reason for this change in atmospheric perspective is the way light refracts differently from color to color at varying distances.



The great painters of the Renaissance, who worked with perspective, discovered how to mimic this natural phenomenon through a targeted application of nuanced color in the foreground, middle, and background of a two-dimensional picture. They experimented a great deal with mountain landscapes, which they depicted impressively with the aid of this color-based perspective technique.

The secret of color perspective? The superimposition of mountain chains achieves the impression of spatial depth if you use more saturated, darker colors in the foreground.

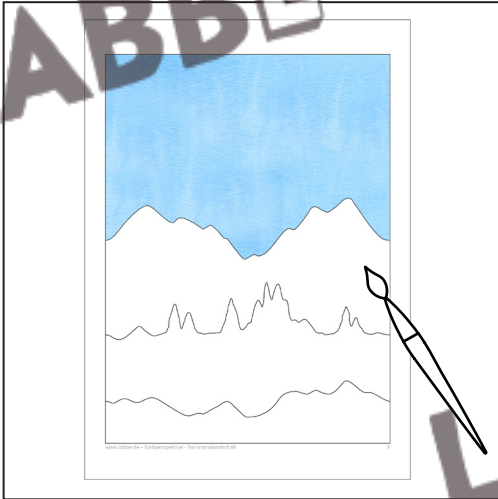
Working with color perspective is truly fascinating. These templates for coloring-in and cutting-out can be used for a group project to create an infinitely wide panoramic landscape consisting of any number of individual pictures... awesome!

Micha Labbé

HOW TO DO IT

Color Perspective - Panoramic Landscape

1



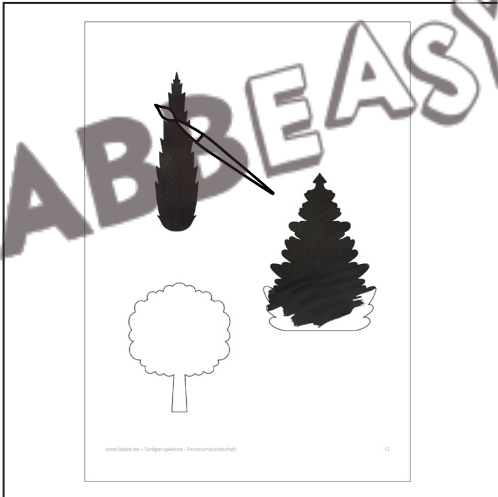
Choose one of the landscapes. Paint the sky in pale blue with watercolors. It's important that everyone in the group uses the same colors.

2



Paint the upper mountain chain in a somewhat darker blue. Once this paint has dried, paint the next one down in an even darker blue. The lower part should be painted black.

3



Choose one of the six trees and paint it black. Leave it to dry properly.

4

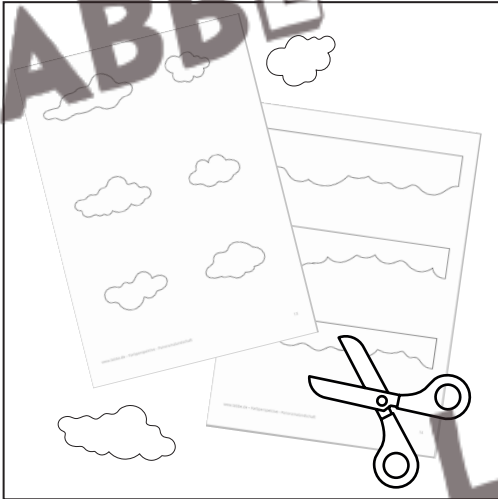


Fold the tree in half lengthwise and cut it out along the outer edges.

HOW TO DO IT

Color Perspective - Panoramic Landscape

5



Cut out the sky and unpainted clouds.

6



Glue the trees, clouds, and sky onto your background.

7



And lastly, stick all of your group's landscape pictures together to form one big panoramic landscape... awesome!!!