

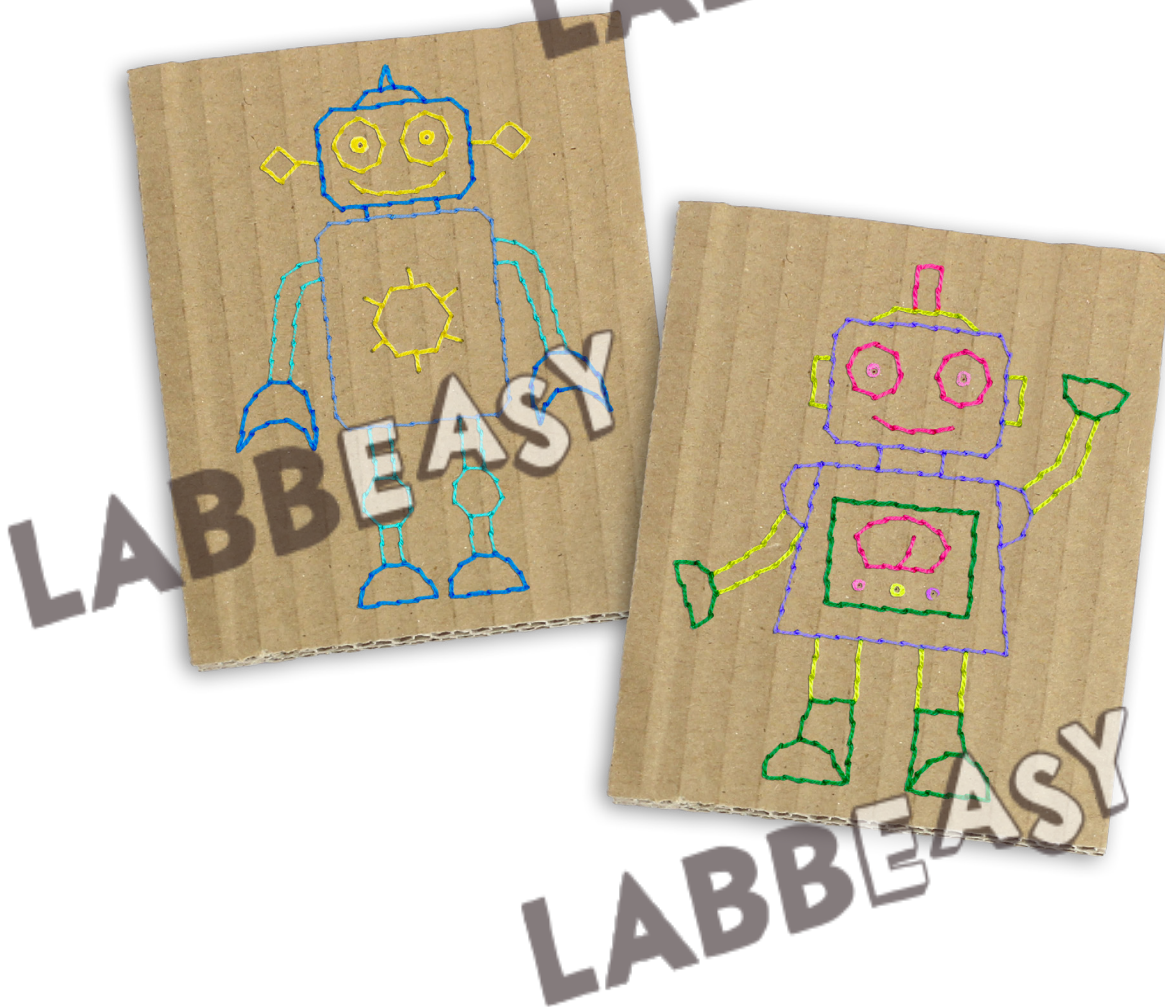
LABBEASY

LABBEASY

Embroidery Patterns - Robots

12 templates of embroidery patterns to stitch
on card stock or paper plates

LABBEASY



PDF 4444-EN

LABBEASY

LABBEASY

Embroidery Patterns - Robots

Overview	Page 3
Ideas & Inspiration	Page 4
How to do it	Page 5 - 6
Embroidery templates	Pages 7 - 12

PRINT SETTINGS

Please use Acrobat Reader to print and make sure that the settings 'Actual size' and 'Auto portrait/landscape' are selected.

SAVE PAPER & TONER

Only print out the pages you need.

COPYRIGHT & LICENCE

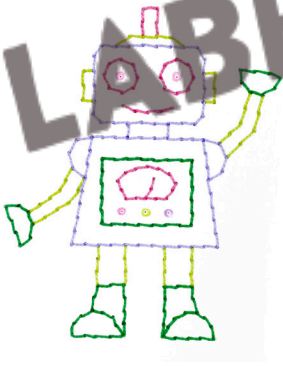
This material is protected by copyright. Labbé holds exclusive rights. © Labbé Publishing

This PDF file may only be used by the original purchaser and is intended for personal use and teaching. Distribution of the PDF file to school staff or to parents and students is not permitted. It is also not permitted to make it available on the internet or to place it on a school server. It is prohibited to use the PDF file, printouts of the PDF file, and objects created from it for commercial purposes. For more information, visit www.labbeasy.com

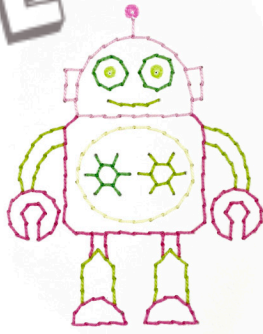
LABBEASY

OVERVIEW

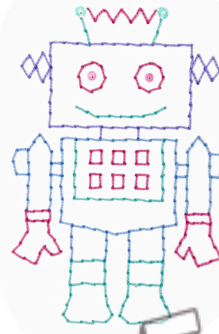
Embroidery Patterns - Robots



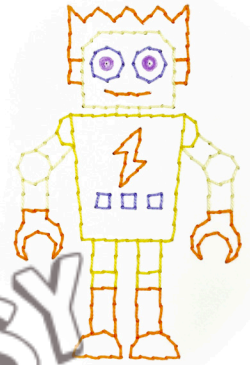
Page 7



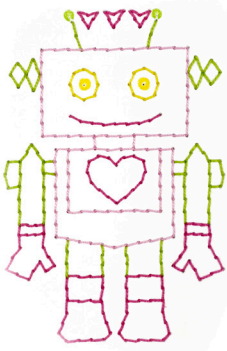
Page 7



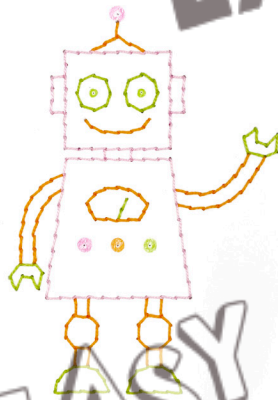
Page 8



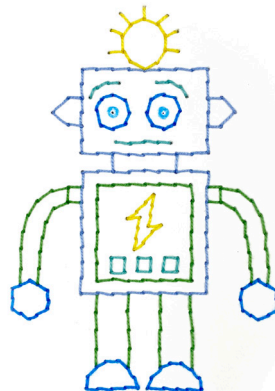
Page 8



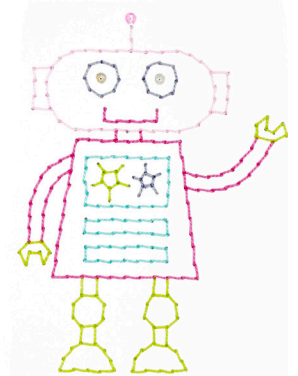
Page 9



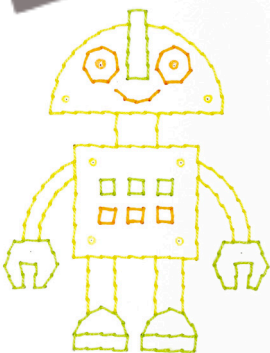
Page 9



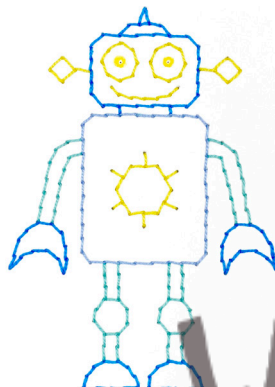
Page 10



Page 10



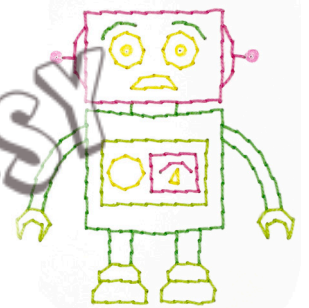
Page 11



Page 11



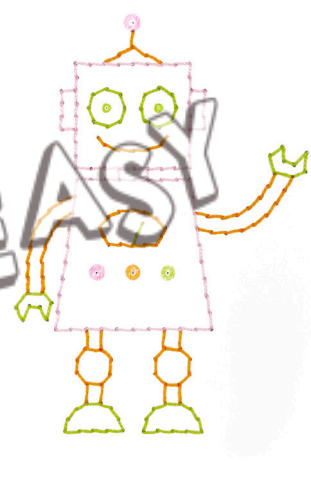
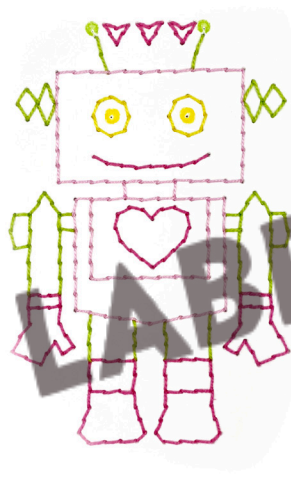
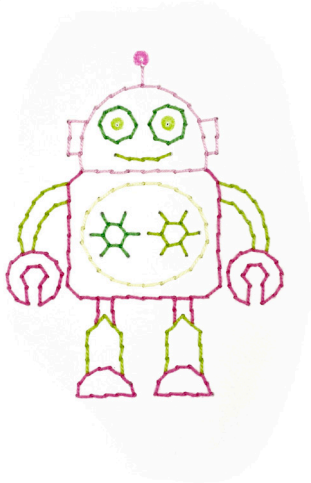
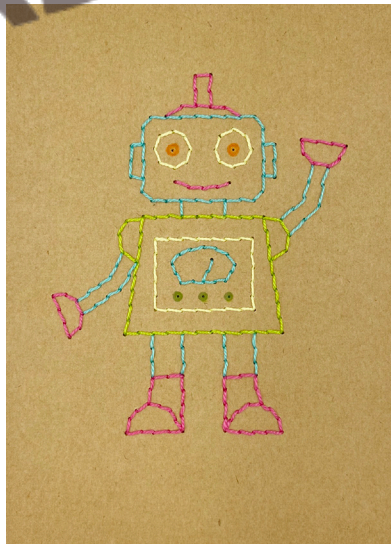
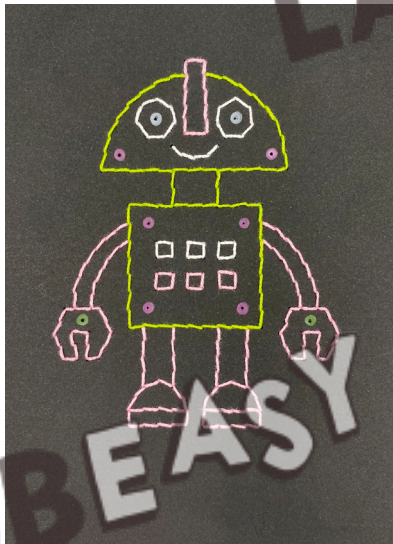
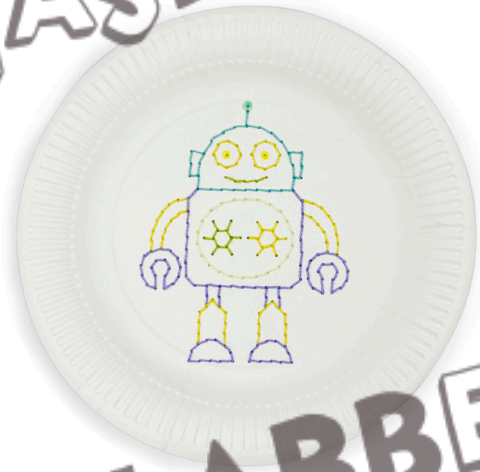
Page 12



Page 12

IDEAS & INSPIRATION

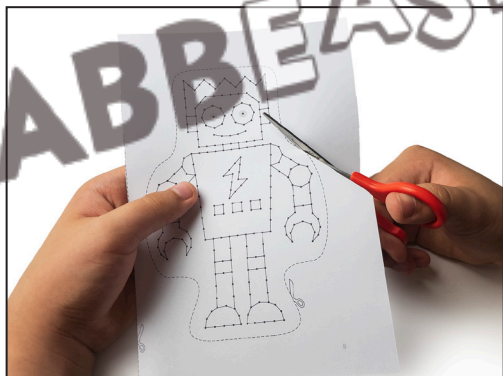
Embroidery Patterns - Robots



HOW TO DO IT

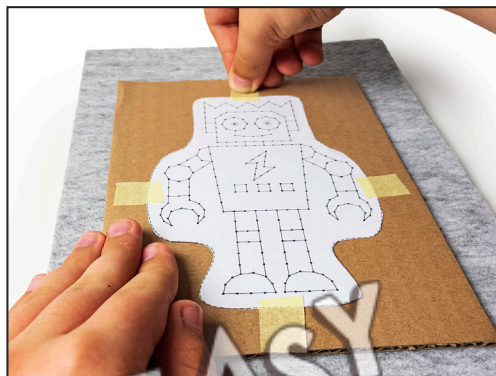
Embroidery Patterns - Robots

1



Print out your chosen pattern on white paper and cut it out along the dotted line.

2



Tape the pattern onto the surface that you want to embroider.

3



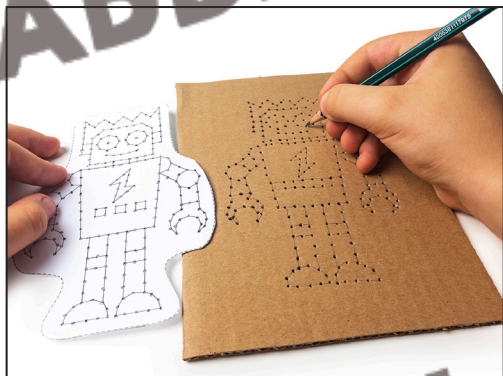
Pierce holes through the dots with a piercing tool. For this you should place a piece of felt, cutting mat or some newspaper underneath.

4



Carefully remove the pattern template from the surface. Keep the template as a guide whilst embroidering.

5



If you like, you can connect the dots with a pencil, so that you can see the shape better when you stitch.

6



Cut a length of embroidery yarn and tie a knot at one end, leaving a little extra at the end. Thread the other end through the eye of an embroidery needle. Push the needle through a hole from the back to the front of the pattern, so that the knot is at the back.