

LABBEASY

LABBEASY

Interactive Pictures - Falling Leaves

16 templates for interactive coloring-in

LABBEASY



LABBEASY

LABBEASY

PDF 4149-EN

LABBEASY

LABBEASY

Interactive Pictures - Falling Leaves

How to do it Pages 3-4

Coloring-in templates Pages 5-20

LABBEASY

PRINT SETTINGS

Please use Acrobat Reader to print and make sure that the settings 'Actual size' and 'Auto portrait/landscape' are selected.

LABBEASY

SAVE PAPER & TONER

Only print out the pages you need.

COPYRIGHT & LICENCE

This material is protected by copyright. Labbé holds exclusive rights. © Labbé Publishing

This PDF file may only be used by the original purchaser and is intended for personal use and teaching. Distribution of the PDF file to school staff or to parents and students is not permitted. It is also not permitted to make it available on the internet or to place it on a school server. It is prohibited to use the PDF file, printouts of the PDF file, and objects created from it for commercial purposes. For more information, visit www.labbeasy.com

LABBEASY

INTRODUCTION

Interactive Pictures

In the first place, interactivity starts with people perceiving each other. This term has also been appropriated by the computer world – in computer science, interactivity expresses the relationship between human and machine. For the most part, interactive pictures are predefined digital images that users can change and modify with the help of a program – often this leads to an interesting and original, new way of seeing.

In the real world – where you don't need a computer, just crayons or watercolors for coloring-in – interactive pictures are especially fun! In these coloring-in templates, simple shapes (in this case falling leaves) are broken up by different lines. The resulting segments can then be individually varied in color and changed. The resulting picture is an abstraction of the respective motifs and the results look awesome!

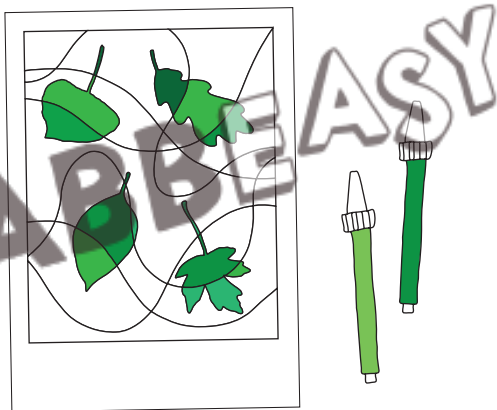
Coloring interactive pictures is very simple, but it requires concentration and a certain technique. Those who want to can begin immediately and simply start painting. For the more ambitious we've explained the system of contrasting colors, by which they can learn how colors influence and effect each other.

Micha Labbé

HOW TO DO IT

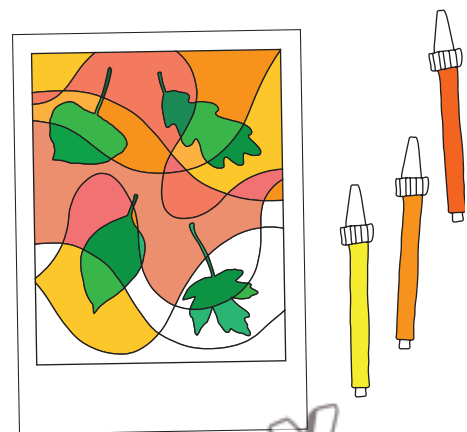
Falling Leaves

1



Print out the template and color-in the leaf motifs with felt-tip pens or colored pencils. The visual effect can be enhanced by the use of contrast and color selection.

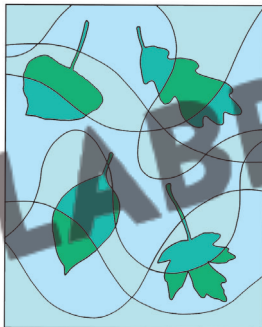
2



You then color-in the remaining areas in different colors.

Coloring in such pictures is very effective and super easy if you use only two color tones for the background and only two color tones for the motifs. The colors you select for the background and those you select for the motifs should contrast. Coloring with only two colors at a time is a fun mathematical game, by the way: No two adjacent areas should be the same color!

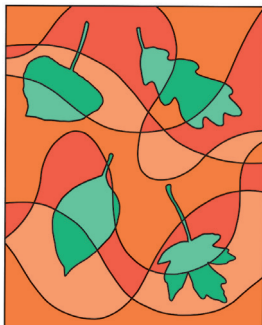
There are a range of ways to use color contrast to good effect – here are a few examples:



LIGHT/DARK CONTRAST

This type of color contrast is produced via the use of different intensities of color tone.

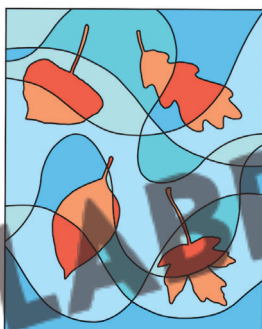
Background = lighter colors
Motif = darker colors



COMPLEMENTARY COLOR CONTRAST

Complementary colors are those that are recognized to work well together. They are found diametrically opposite each other on Itten's color wheel.

Background = red tones
Motif = green tones



COLD/WARM CONTRAST

This color contrast arises from the perception that colors can appear warm or cold. Cold colors are primarily blue tones and bluish-green tones with their gradations. Cold colors trigger a sense of coldness in the viewer. Warm colors are color tones from the red to yellow and brown color spectrum. Warm colors trigger a pleasant and warm feeling in the viewer.

Background = cold colors
Motif = warm colors



PURE COLOR CONTRAST

This color contrast is produced by working with pure colors in colorful combinations. The effect is amplified even more if you add black and white.

